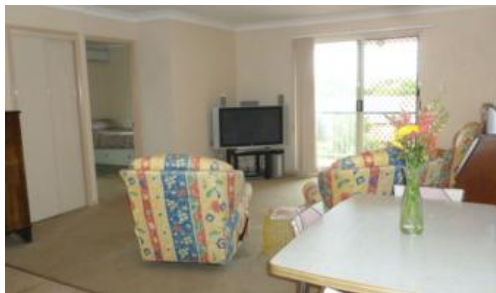


Sold



Unit 7, 16 Wallace Street, Chermside



Easy Living Convenient Lifestyle in Chermside?s...

Smart, modern, and conveniently located, Cas Rosa units were quality built and have been meticulously maintained over the years. This popular 2 story complex offers a secure lifestyle investment to either rent out or live in now.

Immaculately presented, this spacious unit presents an opportunity to acquire a modern-day haven enhanced by indoor-outdoor living to compliment the Queensland climate with some city glimpses.

The layout consists of an open plan living and dining area, a large neat and tidy kitchen that will delight with quality appliances, ample cupboards and bench top space. Spilling off the lounge room is a private balcony, perfect to relax and unwind after a hard day or great for an evening bbq.

Two spacious bedrooms are on offer with useful floor to ceiling built-in robes, ensuite off the main and a light filled bathroom with shower over bath combination with laundry area.

The unit has a secure intercom entry point and a single car garage with plenty of room for storage.

Your transport options are in abundance and you are located only 400m to the Northsides major shopping complex, Westfield Chermside. Bus services run frequently just around the corner.

With low body corporate fees and a friendly complex, you will have to be quick to inspect, as a unit that ticks this many boxes will not last long.

 2  3  1

Price SOLD for \$349,000
Property Type Residential
Property ID 89

Agent Details

Leisa Lowe - 0438 801 298

Office Details

Clontarf
48 Hornibrook Esplanade Clontarf QLD
4019 Australia
07 3283 6737



Body Corporate Fees are \$409 a quarter and Sinking Fund is \$150.96 a quarter.

The above information provided has been furnished to us by the vendor/s. We have not verified whether or not that information is accurate and do not have any belief in one way or the other in its accuracy. We do not accept any responsibility to any person for its accuracy and do no more than pass it on. All interested parties should make and rely upon their own inquiries in order to determine whether or not this information is in fact accurate.