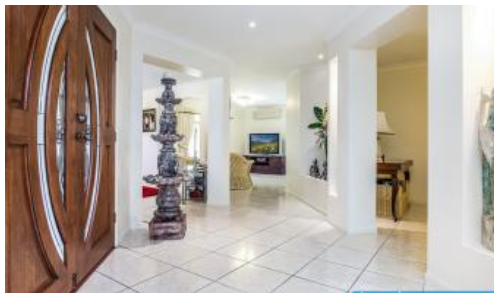




15 Herne Road, Scarborough



LIFESTYLE HOME ON 1012 Block

In the highly sought after suburb of Scarborough, within easy walking distance to the water, sits this lovely large family home. North facing and set back off the road, this lifestyle home also boasts:-

DOWNSTAIRS

- * Large formal entry with lovely timber door
- * Formal lounge with tiled floor
- * Large family room with air con
- * Third separate family room to get away from it all.
- * Formal dining area
- * Informal dining area has large wrap around bay window
- * Kitchen is well appointed with family sized pantry, 900 mm gas cook top with stainless range hood and dishwasher and plenty of cupboards. The outlook from the kitchen window is just charming.
- * Home office / study is well situated on the lower floor.
- * Powder room with separate basin
- * Large laundry which includes laundry shute from the above bathroom, what a bonus !
- * Double lock up remote garage rounds off the ground floor.

UPSTAIRS

- * For cosier entertaining, there is a parents retreat which opens to a large verandah providing beautiful sea breezes to the top level.
- * Main bedroom is expansive with air conditioning, walk in robe and ensuite with spa bath

🛏 4 🏠 2 🚗 4 📏 1,012 m2

Price SOLD for \$820,000
Property Type Residential
Property ID 615
Land Area 1,012 m2

Agent Details

Jan Jones - 0439 758 867

Office Details

Clontarf
 48 Hornibrook Esplanade Clontarf QLD
 4019 Australia
 07 3283 6737



- * Three spacious bedrooms all with built in robes and quality carpets and drapes
- * Main family bathroom has bath and separate shower and laundry chute
- * Separate toilet

EXTRAS

- * The entertaining area is large and has clear drops to enclose completely
- * 6 mtr x 6 mtr x 2.7 lock up garage (powered)
- * Back to Base Alarm
- * Remote controlled front gate
- * New inverter for Solar system 1.5 kw
- * Concreted side access driveway with removable front gate post
- * 6 x 4 mtr Greenhouse
- * Termidor Termite Barrier treatment has been recently done and has 8 year time frame.
- * Fully fenced
- * Water tank
- * Landscaped garden and very private rear yard.

This large family home is beautifully presented and is in a lovely part of Scarborough. Close to schools, shops and transport, this home is one not to miss.

Inspections are by appointment only

The above information provided has been furnished to us by the vendor/s. We have not verified whether or not that information is accurate and do not have any belief in one way or the other in its accuracy. We do not accept any responsibility to any person for its accuracy and do no more than pass it on. All interested parties should make and rely upon their own inquiries in order to determine whether or not this information is in fact accurate.