

1008/99 Marine Parade, Redcliffe



## 10th Floor, Amazing Views, Quality Inclusions

This one is not your typical 1-bedroom apartment. Positioned in the luxury Mon Komo Residences, unit 1008 presents a very tidy package along with stunning views. The 10th level position provides dramatic views across the bay, shoreline, port of Brisbane, Brisbane Airport and even Brisbane City – a view rarely found in the price range. The property has also undergone a spruce up with new carpets, fresh paint and new window furnishings. If you are looking for a luxury apartment and easy living in a well-regarded building close to all the modern conveniences this is the one you need.

The property features:

- Fresh paint, new carpet and new window furnishings throughout, including sheers and block out curtains
- Open plan lounge, kitchen and dining space with light and

1 1 1

**Price** Offers Over \$619,000

**Property Type** Residential

**Property ID** 2270

**Floor Area** 82 m2

### Agent Details

Rachele Jones - 0432 834 733

### Office Details

Clontarf  
48 Hornibrook Esplanade  
Clontarf QLD 4019 Australia  
07 3283 6737

bright décor. This space flows through full length glass sliding doors to the covered balcony. These spaces boast stunning views – to the waters of Moreton Bay, leafy suburban views across Redcliffe and along the shoreline. The views are extensive from level 10 as you also watch the Port of Brisbane, Brisbane Airport coming and goings and across to Brisbane City. Truly and interesting and extensive outlook.

- Modern kitchen with stone benchtops, decent storage, dishwasher, electric wall oven, gas cooktop, rangehood, double fridge cavity, and a built-in microwave.
- 1 bedroom with great water views. There is a built-in robe, new carpet and direct access to the balcony
- Centrally located bathroom with a large walk-in shower, storage, wash basin and a toilet
- European laundry
- Ducted and zoned air conditioning and high ceilings
- 1 car parking space in the secure basement carpark.

You will be hard pressed to find better than the lifestyle on offer here. The complex oozes class and boasts 2 lifts, offers secure entry with intercom system, an indoor swimming pool, an outdoor swimming pool, 2 gyms and the benefits of discounts to its own restaurant and bar located downstairs (under the Oaks tower).

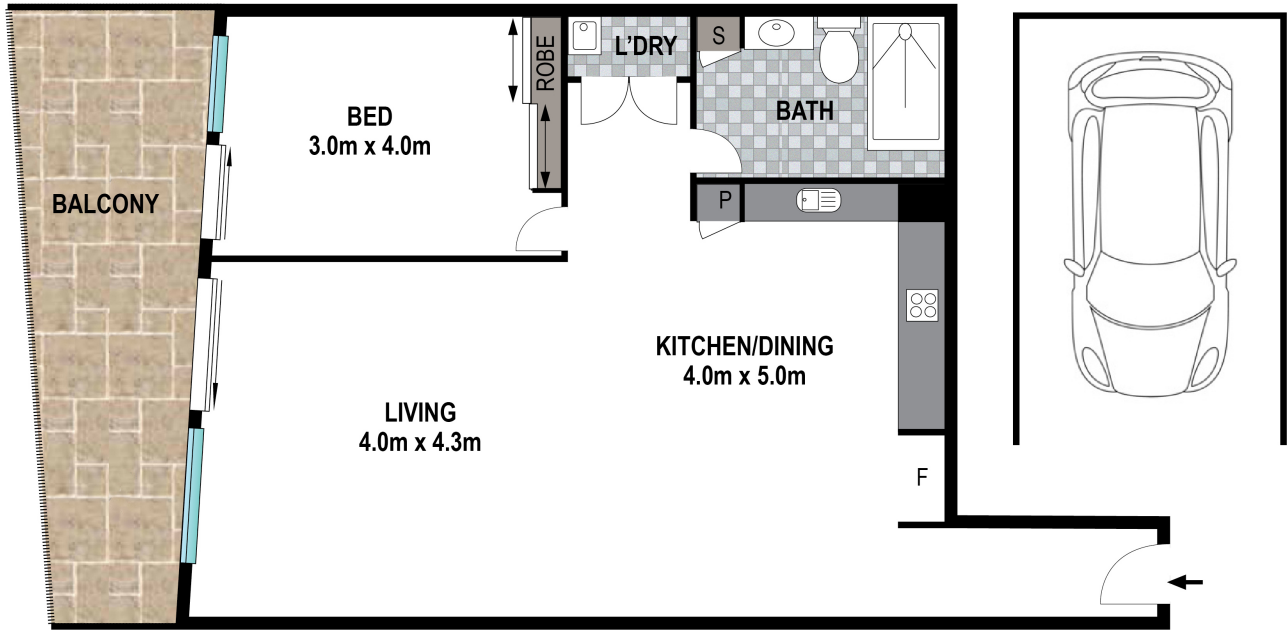
The central Redcliffe CBD position has kilometres of beach and even the Redcliffe Lagoon right at the front door. Enjoy the weekend markets and variety of community activities run on a regular basis along the Redcliffe foreshore. Pop down for a swim at Settlement Cove or Suttons Beach (Redcliffe's only lifeguard patrolled beach) or a walk or cycle along the kilometers of beachside tracks. There is a vibrant cafe precinct below with a myriad of restaurants and cafes along the waterfront to choose from. Wander through the markets on Sunday and have a leisurely breakfast overlooking the Redcliffe Jetty, then finish up with a stroll home via the lagoon. From here public transport is easy to catch and you just need to cross the

road to Bluewater Square to access the nearest grocery store

If you're ready to start out, downsize or have the perfect holiday getaway this is a must see.

*Disclaimer: This information is provided for general information purposes only and is based on information provided by the Seller and may be subject to change. No warranty of representation is made as to its accuracy and interested parties should place no reliance on it and should make their own independent enquiries.*

*The above information provided has been furnished to us by the vendor/s. We have not verified whether or not that information is accurate and do not have any belief in one way or the other in its accuracy. We do not accept any responsibility to any person for its accuracy and do no more than pass it on. All interested parties should make and rely upon their own inquiries in order to determine whether or not this information is in fact accurate.*



 1 Bed
  1 Bath
  1 Car



Scale in meters. Indicative only. Dimensions are approximate. All information contained here in is gathered from sources we believe to be reliable. However we cannot guarantee its accuracy and interested persons should rely on their own enquiries.



1008/99 Marine Pde, Redcliffe