



Unit 10, 4 Eveline St, Margate




SENSATIONAL WATER VIEWS

This stunning apartment sits highly elevated on the top floor of the complex, boasting breathtaking views of Moreton Bay and beyond from the large east facing balcony in the ever-popular suburb of Margate.

This boutique complex of 11, prime positioned units are within seconds to the waterfront, it offers plenty of natural light with its double sliding glass doors and windows.

You can relax and enjoy the refreshing sea breezes and stunning views all year round from this unit with a versatile floor plan. Walking inside you are greeted with a spacious open-plan living and dining area that extends to the balcony, there will be plenty of room for gatherings with family and friends so you can share the spectacular views!

The apartment comes complete with a practical kitchen area that also enjoys those water views from which could do with an update that currently has ample cupboards and bench space.

 3  2  2 

167 m²

Price \$920,000
Property Type Residential
Property ID 2238
Land Area 167 m²

Agent Details

Leisa Lowe - 0438 801 298

Office Details

Clontarf
48 Hornibrook Esplanade
Clontarf QLD 4019 Australia
07 3283 6737



There are 3 well-sized bedrooms including the master with ensuite, robe and a further 2 bedrooms which could easily be transformed into a home office or library room for one of them.

The unit has a massive bathroom that has a large corner spa bath and separate shower with laundry room included and a separate toilet.

Some of the many Features of Unit 10/4 Eveline Street are:

1 single lockup garage with mezzanine area for a workshop or extra storage

Extra Car space in the complex

Spectacular living area and combined dining room that has sensational views

Massive master bedroom with ensuite

Air-conditioning in the main living area

2 Extra bedrooms

Family bathroom with spa

Plenty of storage space

Timber laminate flooring

Electric awnings over the deck

Smoke alarm compliant

Boutique complex of 11 units

Secure complex with electric gate

Common Bbq area

Low body corporate as there is NO lift in the complex

Body Corporate Fees are including sinking fund of aprox \$1009.81 per quarter.

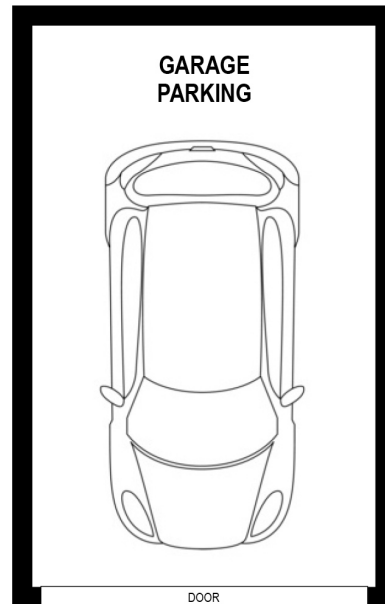
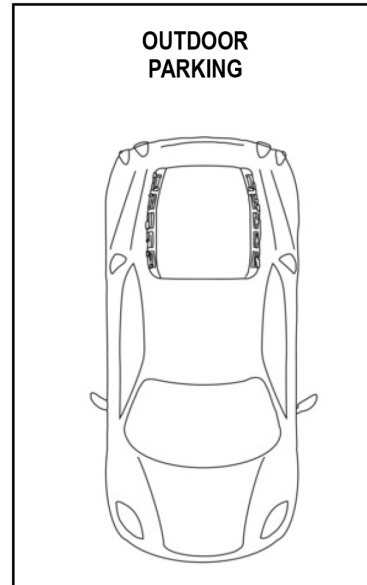
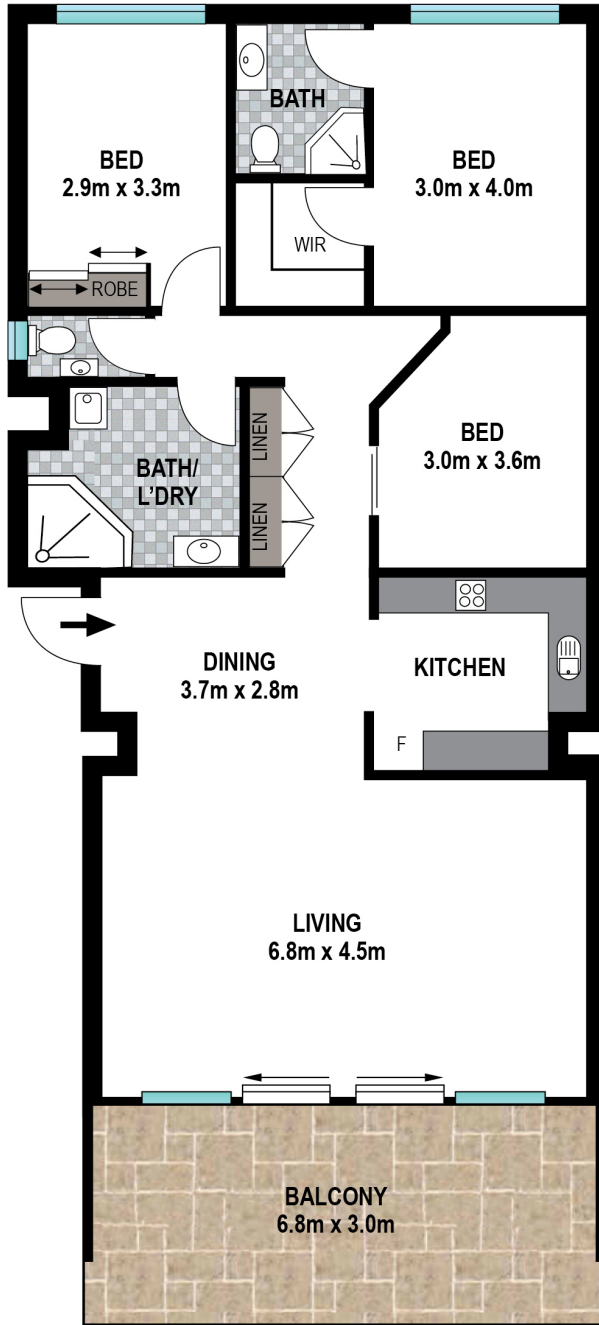
You will love this view, the location and great fishing spots, as well as local shopping centres, restaurants and within walking distance to Scott's point for that morning swim.

Do not miss out on the opportunity to make this your own slice of paradise. Contact Leisa Lowe today to schedule a viewing and take the first step toward calling this remarkable property your new home.

Disclaimer: This information is provided for general information

purposes only and is based on information provided by the Seller and may be subject to change. No warranty of representation is made as to its accuracy and interested parties should place no reliance on it and should make their own independent enquiries.

The above information provided has been furnished to us by the vendor/s. We have not verified whether or not that information is accurate and do not have any belief in one way or the other in its accuracy. We do not accept any responsibility to any person for its accuracy and do no more than pass it on. All interested parties should make and rely upon their own inquiries in order to determine whether or not this information is in fact accurate.



 3 Bed
  2 Bath
  2 Car



Scale in meters. Indicative only. Dimensions are approximate. All information contained here in is gathered from sources we believe to be reliable. However we cannot guarantee its accuracy and interested persons should rely on their own enquiries.



10/4 Eveline St, Margate