

Sold



Unit 2, 25-27 Georgina St, Woody Point



EAST OF OXLEY TOWNHOUSE - 300 METRES TO THE WATER

This three level townhouse has a brilliant design and enjoys a prime position close to the water and in trendy Woody Point. All three levels of the home are light and airy and enjoy the gorgeous bay breezes. You can walk 300 metres to the waterfront parkland which will take you in either direction for kilometres of scenic walkways. Woody Point is a small suburb with a great community atmosphere enhanced by lovely boutiques and coffee shops.

* Three levels of stylish living with quality furnishings and fixtures

First Level - Comprises a single garage with remote entry and internal access

- Queen size bedroom with robe, ensuite and ceiling fan

 3  3  1

Price	SOLD
Property Type	Residential
Property ID	2048

Agent Details

Jan Jones - 0439 758 867

Office Details

Clontarf
48 Hornibrook Esplanade
Clontarf QLD 4019 Australia
07 3283 6737



- Access to a landscaped courtyard

Second Level - This level is all about entertaining and your day to day living

- Open plan living and dining with air conditioning and flowing out to the balcony

- Spacious kitchen with dishwasher, pantry, good bench space and storage

- Laundry and powder room

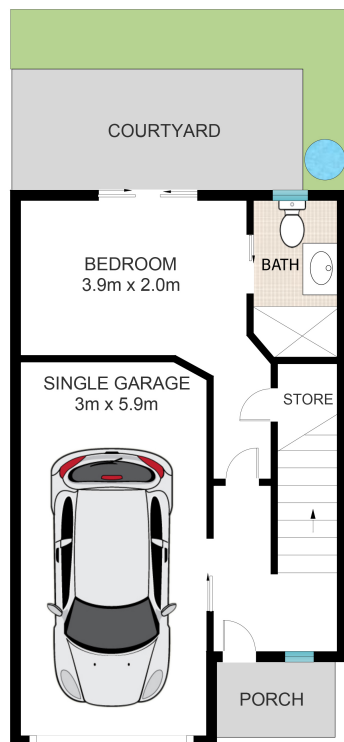
Third Level - Two large bedrooms both with ensuites, robes and ceiling fans

- Main bedroom with air conditioning

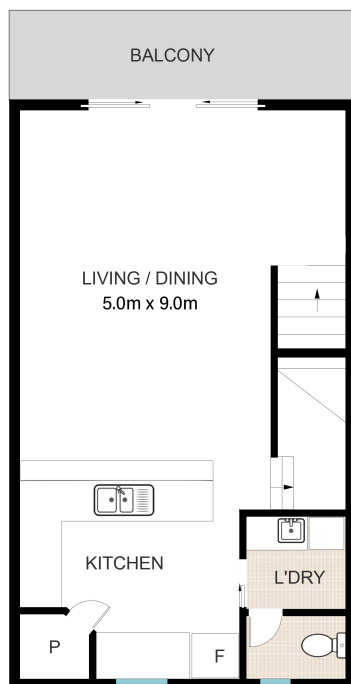
The complex has moderate body corporate fees.

Disclaimer: All information gathered herein are from sources we believe to be reliable. However, we can not guarantee its accuracy and interested persons should rely on their own inquiries.

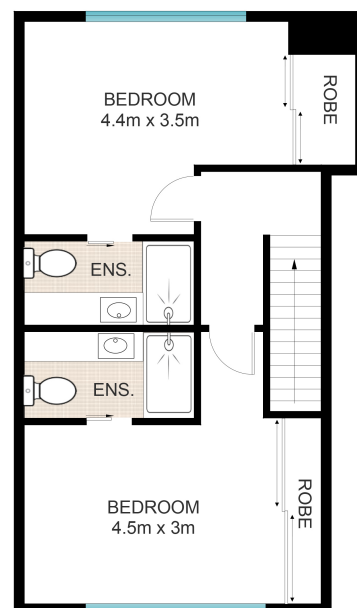
The above information provided has been furnished to us by the vendor/s. We have not verified whether or not that information is accurate and do not have any belief in one way or the other in its accuracy. We do not accept any responsibility to any person for its accuracy and do no more than pass it on. All interested parties should make and rely upon their own inquiries in order to determine whether or not this information is in fact accurate.



ENTRY LEVEL



FIRST LEVEL



SECOND LEVEL

This floor plan is for illustrative purposes only. Whilst every attempt has been made to ensure the accuracy of this floor plan, all measurements are approximate only. No responsibility is taken for any errors, omission or miss-statement. Potential purchasers should make their own enquiries as to the accuracy of this floor plan.

2-25 Georgina St, Woody Point

