



37 Tilley Street, Redcliffe



Central Location – Cottage Cutie

Situated close to everything including the Redcliffe Hospital, shops, schools, public transport and even the beach this one is a cracker. The current owners have improved the home and made the most of the lovely original features to make this a peaceful and relaxing seaside hideaway. If you are looking for a great start, somewhere to slow down or a savvy investment this could be the one you have been waiting for.

The home boast:

- Lovely original features - high ceiling, timber floors and original decorative doors
- 2 bedrooms, the main bedroom has a ceiling fan. The other bedroom has a built-in robe
- Formal lounge with air conditioning
- Formal dining (could be a 3rd bedroom with a few

🛏 2 🏠 1 🚗 1 📏

405 m2

Price SOLD for \$550,000

Property Type Residential

Property ID 1929

Land Area 405 m2

Agent Details

Rachele Jones - 0432 834 733

Office Details

Clontarf
48 Hornibrook Esplanade
Clontarf QLD 4019 Australia
07 3200 0707

adjustments)

07 3283 6737



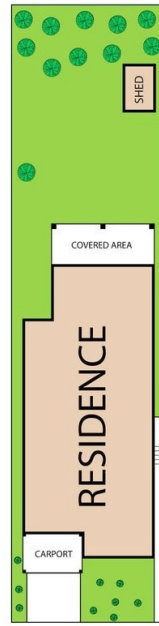
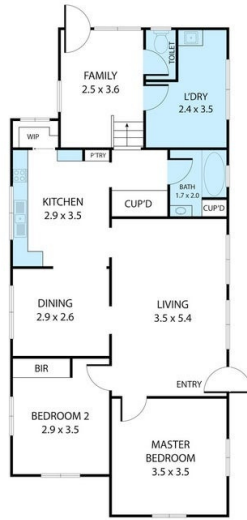
- Spacious kitchen with walk in pantry and good storage. There is also a new upright oven.
- Study/home office/family space at the rear of the home
- Updated bathroom with a shower over the bathtub. There is also a vanity basin with storage. The toilet is separate
- Internal laundry and storage/workshop area
- Covered outdoor entertainment area overlooks the backyard
- Fully fenced and landscaped 405sqm block with room for the kids and pet to play. There also fruit trees including mango and avocado
- Security screens on the windows and doors
- 1 car carport
- Extras include compliant smoke alarms, new electrical wiring and a new switchboard, linen/broom cupboard, lock up garden shed

Position in an area where you can walk to just about anything is one is a gem. Situated in a pocket where lots of renovation, rebuilds and rejuvenation is happening this one is sure to increase in value. The home has a calm and welcoming feel upon entering and will be sure to please.

Motivated owners welcome all serious offers

All information contained herein is gathered from sources we believe to be reliable. However, we cannot guarantee its accuracy and interested persons should rely on their own enquiries.

The above information provided has been furnished to us by the vendor/s. We have not verified whether or not that information is accurate and do not have any belief in one way or the other in its accuracy. We do not accept any responsibility to any person for its accuracy and do no more than pass it on. All interested parties should make and rely upon their own inquiries in order to determine whether or not this information is in fact accurate.



37 Tilley Street, Redcliffe QLD, Australia, 4020

TOTAL APPROX FLOOR AREA: 84 SQM

Whilst every effort has been made to ensure the accuracy of the floor plan contained here, measurements of doors, windows, stairs and any other items are approximate and are responsibility to those for any errors, omissions, or misstatements. This plan is for illustrative purposes only and should be used in such by any prospective purchaser.