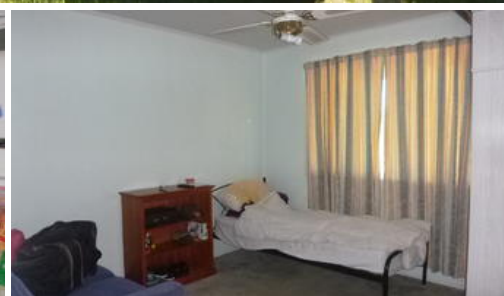


Sold



56 Plume Street, Redcliffe



CENTRAL LOCATION- GREAT INVESTMENT

This high set timber and brick home is nicely set back on it's 607 sq mtr block. With very long term tenants who would love to stay, this home also boasts:-

- * Large lounge with polished timber floors
- * Family kitchen with plenty of cupboards and dishwasher
- * Separate dining area
- * Three large bedrooms, 2 with overhead fans
- * Very large bathroom
- * Rear timber deck
- * Double lock up garage
- * Plenty of space downstairs
- * Fully fenced yard

Within a short distance to transport, major shopping centres and schools, this home will be an excellent addition to your portfolio or a great first buy.

Inspections are by appointment only.

The above information provided has been furnished to us by the vendor/s. We have not verified whether or not that information is accurate and do not have any belief in one way or the other in its accuracy. We do not accept any responsibility to any person for its accuracy and do no more than pass it on. All interested parties should make and rely upon their own inquiries in order to determine whether or not this information is in fact accurate.

3 1 2

Price	SOLD
Property Type	residential
Property ID	161
Land Area	607 m2

Agent Details

Heather Murray - 0450 104 181

Office Details

Clontarf
48 Hornibrook Esplanade Clontarf QLD
4019 Australia
07 3283 6737

